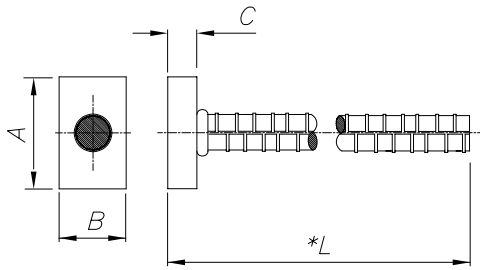


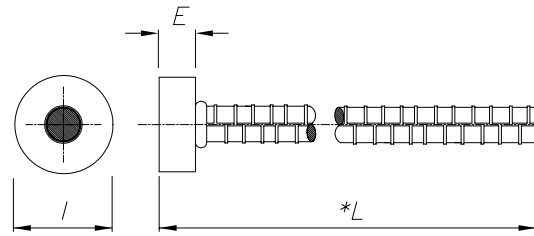
HRC Standard & High Performance T- Headed Bars

U.S. STANDARD: Made according to ASTM A970-07 Class A & B (and all earlier versions).

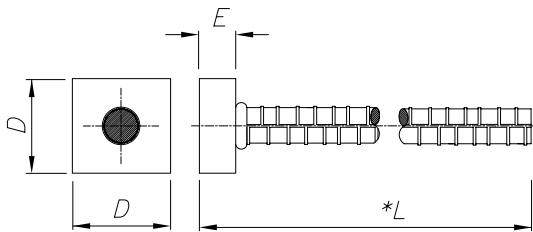
TYPE 110



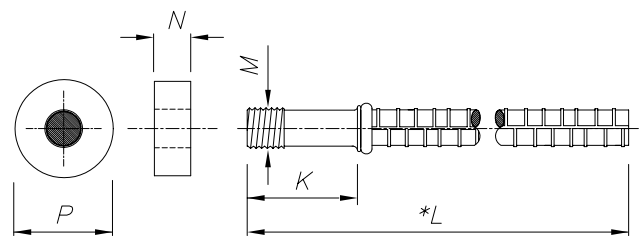
TYPE 150



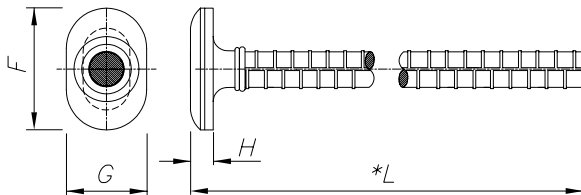
TYPE 120



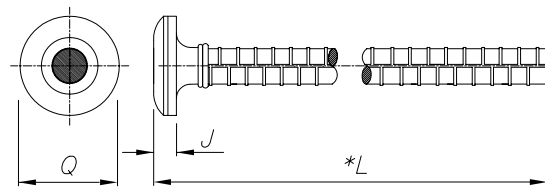
TYPE 170



TYPE 210



TYPE 220



*L = ORDERING LENGTH. Series 100 & 200 is available in lengths from 8" to 80'.
All data subject to change without prior notice.

Different types of heads can be made assembled at each end of reinforcing bars
as per customer's requirements.

HRC 220 available in A706 & A615 Gr 75

:R/Drawings 01/HRC Standards/HRC T-Head Series/HRC 100.dwg - Mar 04, 2009

Properties				Head / Thread Dimensions															
ASTM 706 Standard																			
Bar Size	Dia. in	A in ²	Strength in lbs Yield Tensile	A Inch	B Inch	C Inch	D Inch	E Inch	F Inch	G Inch	H Inch	I Inch	J Inch	K Inch	M (mm)	N Inch	P Inch	Q Inch	
#4	0.500	0.20	— —	2.00	1.00	0.50	---	---	---	---	---	---	0.41	---	---	---	---	1.750	
#5	0.625	0.31	18600 24800	2.50	1.25	0.50	2.00	0.500	---	---	---	1.98	0.50	3.75	M18	0.750	2.000	2.000	
#6	0.750	0.44	26400 35200	3.00	1.50	0.75	2.25	0.625	3.00	1.52	.612	2.37	0.56	3.75	M24	1.000	2.375	2.375	
#7	0.875	0.60	36000 48000	4.00	1.50	0.75	2.50	0.625	3.50	1.73	.625	2.77	0.63	3.75	M24	1.000	2.750	2.750	
#8	1.000	0.79	47400 63200	4.00	2.00	.875	3.00	0.750	4.00	1.97	.687	3.20	0.63	3.00	M27	1.125	3.250	3.250	
#9	1.128	1.00	60000 80000	5.00	2.00	.875	3.25	0.750	4.50	2.21	.750	3.63	0.71	4.00	M31	1.250	3.625	3.625	
#10	1.270	1.27	76200 101600	5.00	2.50	1.00	3.50	1.000	5.00	2.52	.812	4.00	0.89	4.00	M38	1.500	4.000	4.000	
#11	1.410	1.56	93600 124800	6.00	2.50	1.25	4.00	1.000	5.50	2.76	1.00	4.46	0.91	5.12	M45	1.875	4.500	4.500	
#14	1.693	2.25	135000 180000	7.50	3.00	1.25	5.00	1.250	6.25	3.60	1.25	5.35	1.28	6.25	M52	2.125	5.375	5.375	
#18	2.257	4.00	240000 320000	---	---	---	---	---	8.25	4.41	1.50	7.14	1.65	6.75	M68	2.750	7.000	6.500	



HEADED REINFORCEMENT CORP.
11200 Condor Avenue • Fountain Valley, CA 92708
Tel: (714) 557-1455 • Fax: (714) 557-4460