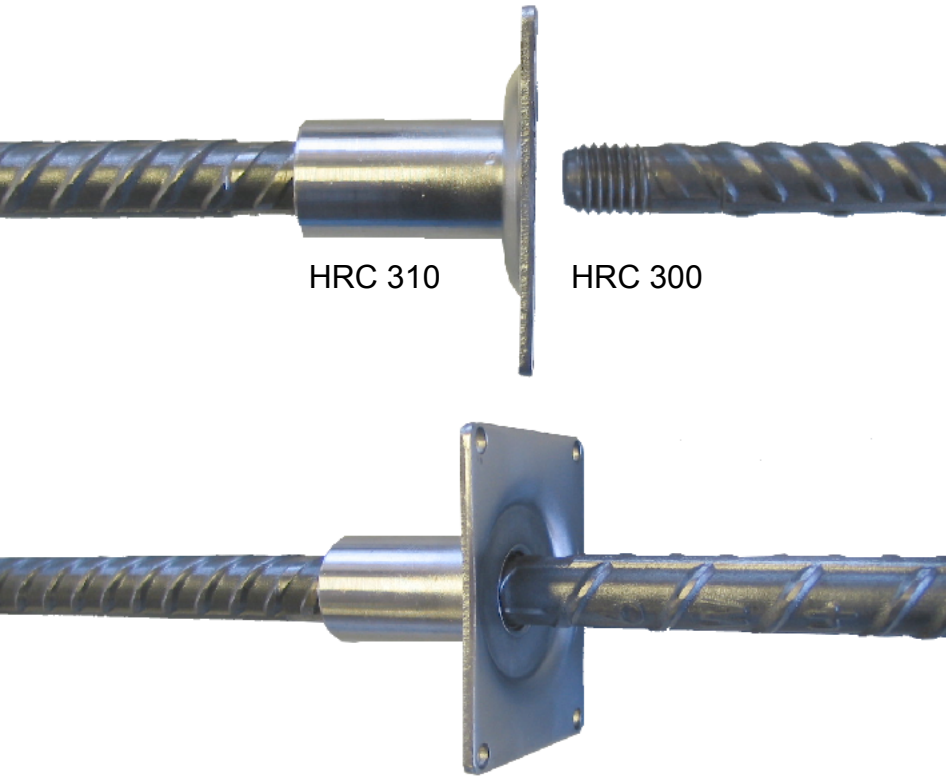




# Form Protector



## • HRC 300 SERIES

Headed Reinforcement Corporation introduces the new **HRC 300 Series Form Protector**. The **HRC 300 Series** provides an effective alternative to achieve rebar continuity without damaging formwork and improves constructability by reducing transition zone interference when adding headed, hooked or straight dowel bars post pour.

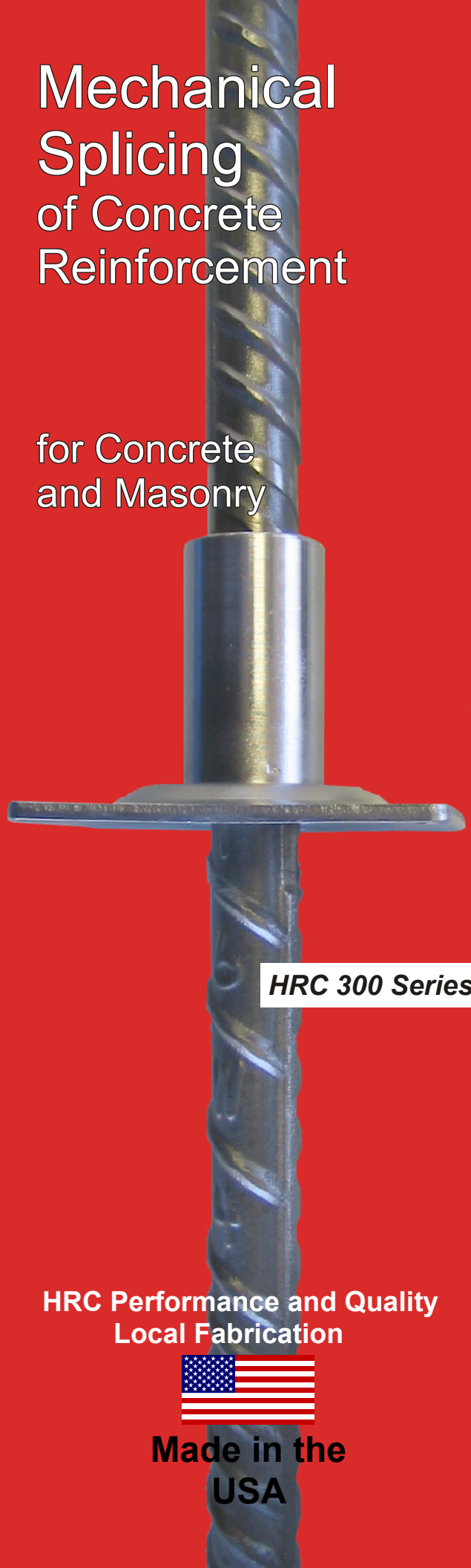
The **HRC 300 Series Form Protector** exceeds Type 1 and Type 2 splice code requirements. When it comes to performance, you can rely on the **HRC 300 Series Form Protector** to outperform dowel bars. Contact your local HRC Representative for additional information.



Headed Reinforcement Corp.  
11200 Condor Ave. Fountain Valley, CA 92708  
714-557-1455 714-557-4460 fax

# Mechanical Splicing of Concrete Reinforcement

## for Concrete and Masonry



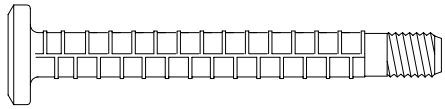
**HRC 300 Series**

HRC Performance and Quality  
Local Fabrication

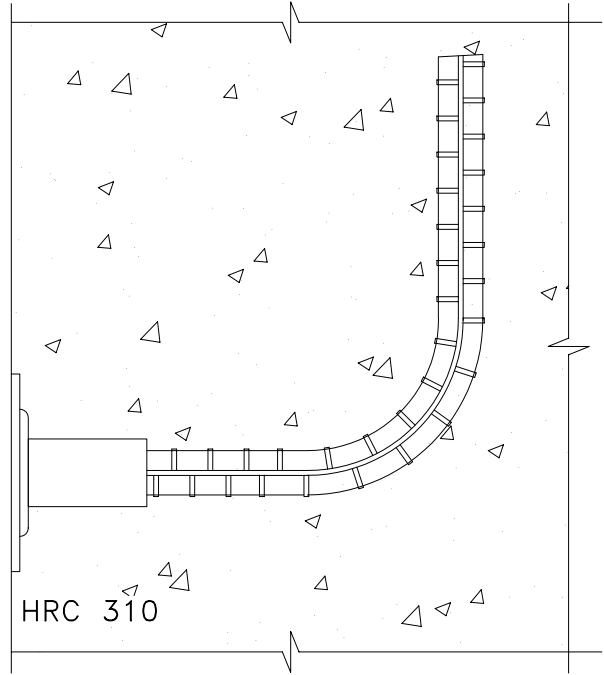


**Made in the USA**

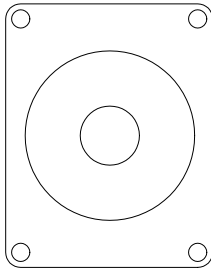
# HRC 300/310



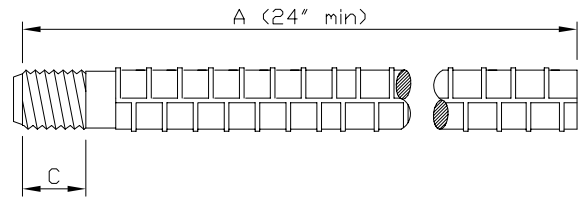
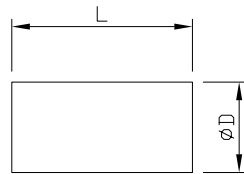
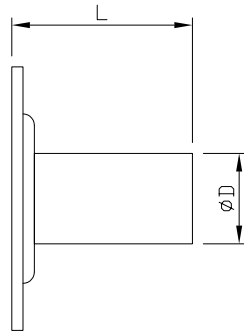
HRC 300



HRC 310



Optional Flange



Series 300 Standard Mechanical Couplers have mechanical properties which equal that specified for A706/A706M reinforcement bar.  
 \*A = ORDERING LENGTH (24" min).

Rebar Properties			Thread/Coupler Dimensions			
Bar Size	Dia. in	A in <sup>2</sup>	Thread Size UNC	Length		
				C Inch	ØD Inch	L Inch
#4	0.500	0.20	1/2"-13 UNC	0.750	0.88	1.88
#5	0.625	0.31	5/8"-11 UNC	0.625	1.00	1.88
#6	0.750	0.44	3/4"-10 UNC	0.750	1.13	2.25
#7	0.875	0.60	7/8"-9 UNC	1.125	1.38	2.63
#8	1.000	0.79	1"-8 UNC	1.250	1.50	3.00

Note: Dimensions subject to change without notice.

:R/HEADED BARS/HRC 300-310



## HEADED REINFORCEMENT CORP.

11200 Condor Avenue • Fountain Valley, CA 92708  
 Tel: (714) 557-1455 • Fax: (714) 557-4460