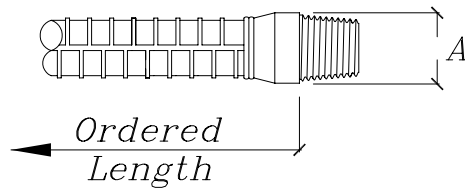


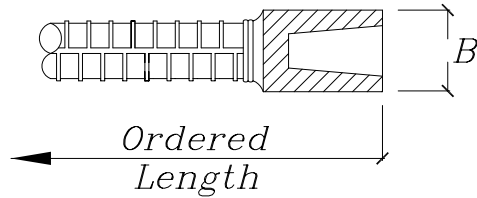
# HRC 400 Series High Performance Mechanical Couplers

## HRC 400 Series

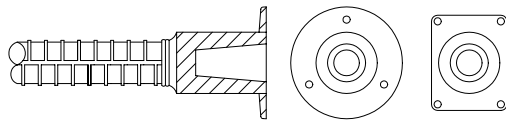
### HRC 410



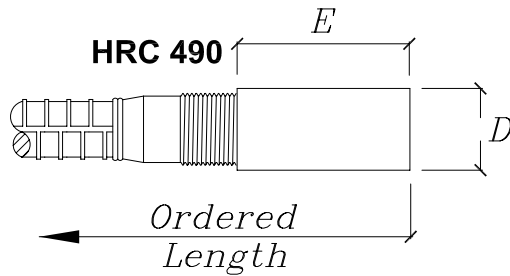
### HRC 420



### HRC 420F (w/ Flange)

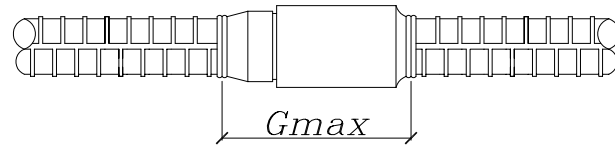
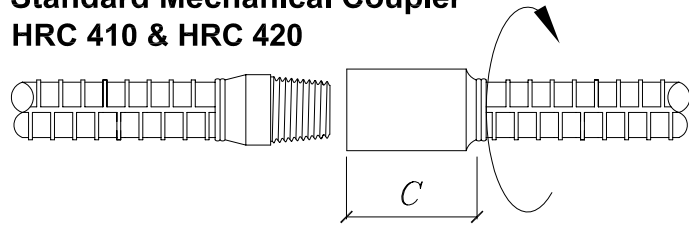


### HRC 490

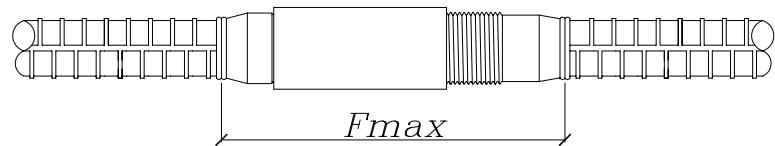
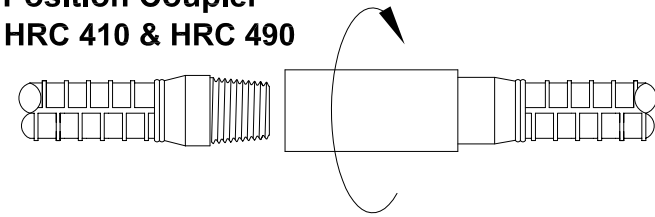


## Combinations

### Standard Mechanical Coupler HRC 410 & HRC 420



### Position Coupler HRC 410 & HRC 490



Bar Size	Dia. (Inch)	Bar Dia. USA <sup>1)</sup>	A (in.)	B (in.)	C (in.)	D (in.)	E (in.)	Fmax (in.)	Gmax (in.)	Torque* (lb-ft)
# 5	0.625	16mm	1.000	1.000	1.625	NA	NA	NA	2.625	100
# 6	0.750	19mm	1.250	1.250	1.750	NA	NA	NA	2.625	100
# 7	0.875	22mm	1.500	1.500	2.000	NA	NA	NA	3.000	100
# 8	1.000	25mm	1.625	1.625	2.250	NA	NA	NA	3.500	150
# 9	1.128	29mm	1.750	1.750	2.500	NA	NA	NA	4.000	150
# 10	1.270	32mm	1.750	2.000	2.750	2.125	6.181	13.00	5.25	200
# 11	1.410	36mm	1.750	2.125	3.125	2.250	6.693	14.00	5.25	200
# 14	1.693	43mm	2.250	3.000	4.125	3.000	7.875	17.00	6.00	250
# 18	2.257	57mm	3.000	3.500	5.000	3.625	9.843	21.00	7.00	250

1) Designed to exceed actual stress and strain capacity of grade 60, made according to ASTM A706M specifications or equal.

\* - Unless project qualifies and approves hand-tightening.



**HEADED REINFORCEMENT CORP.**

11200 Condor Avenue • Fountain Valley, CA 92708

Tel: (714) 557-1455 • Fax: (714) 557-4460