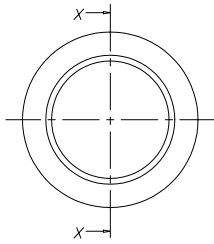
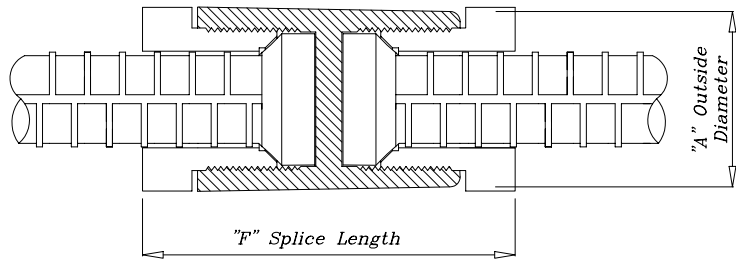


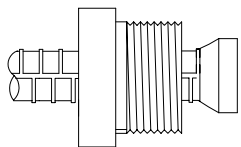
XTENDER 525 Form Protector, Position and Transition Coupler



End View

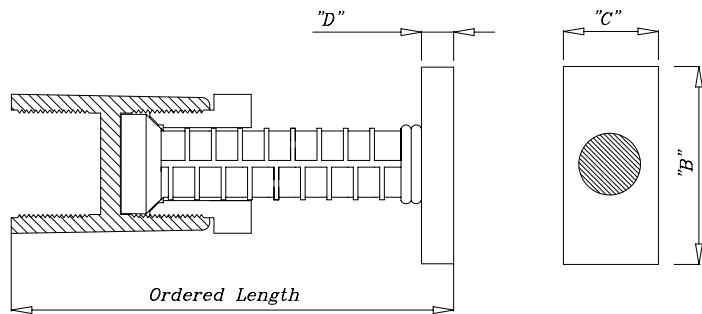


Elevation

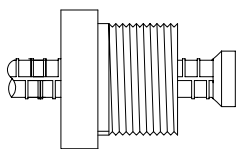


One bar size down

HRC 501
Transition Nut

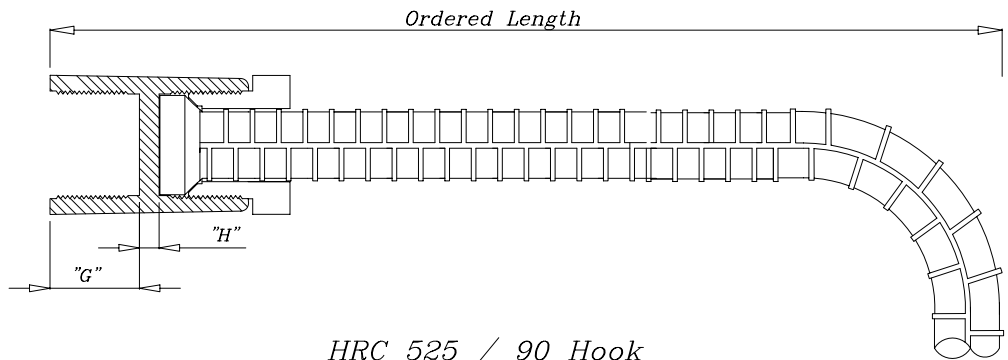


HRC 525 / 110 (Headed)



Two bar sizes down

HRC 502
Transition Nut



HRC 525 / 90 Hook

525 Dimensions	#5 in.	#16 mm	#6 in.	#19 mm	#7 in.	#22 mm	#8 in.	#25 mm	#9 in.	#29 mm	#10 in.	#32 mm	#11 in.	#36 mm	#14 in.	#43 mm
A. Coupler OD	1 1/2	38	1 5/8	41	1 7/8	48	2 1/8	54	2 3/8	60	2 5/8	67	2 7/8	73	3 1/2	89
B. T-Head length	2 1/2	64	3	76	4	102	4	102	5	127	5	127	6	152	7 1/2	191
C. T-Head width	1 1/4	32	1 1/2	38	1 1/2	38	2	51	2	51	2 1/2	64	2 1/2	64	3	76
D. T-Head depth	1/2	12	3/4	19	3/4	19	7/8	22	7/8	22	1	25	1 1/4	32	1 1/4	32
E. Flange Height	2 1/4	57	2 3/8	60	2 5/8	67	2 7/8	73	3 1/8	79	3 3/8	86	3 3/4	95	4 1/4	108
F. Splice Length	3 3/8	86	3 3/4	95	4 1/4	108	4 3/4	120	5	127	5 3/8	136	5 5/8	143	6 5/8	168
G. Embed Length	0.91	23	1.06	27	1.22	31	1.38	35	1.46	37	1.57	40	1.61	41	1.89	48
H. Wall Thickness	3/16	4.8	1/8	4	5/32	4	5/32	4	5/32	4	5/32	4	5/32	4	5/32	4

20/May./2012

All data subject to change without notice.



HEADED REINFORCEMENT CORP.
11200 Condor Avenue • Fountain Valley, CA 92708
Tel: (714) 557-1455 • Fax: (714) 557-4460